



# Mapping Traditional Land Use Change in Yellowknife, NT

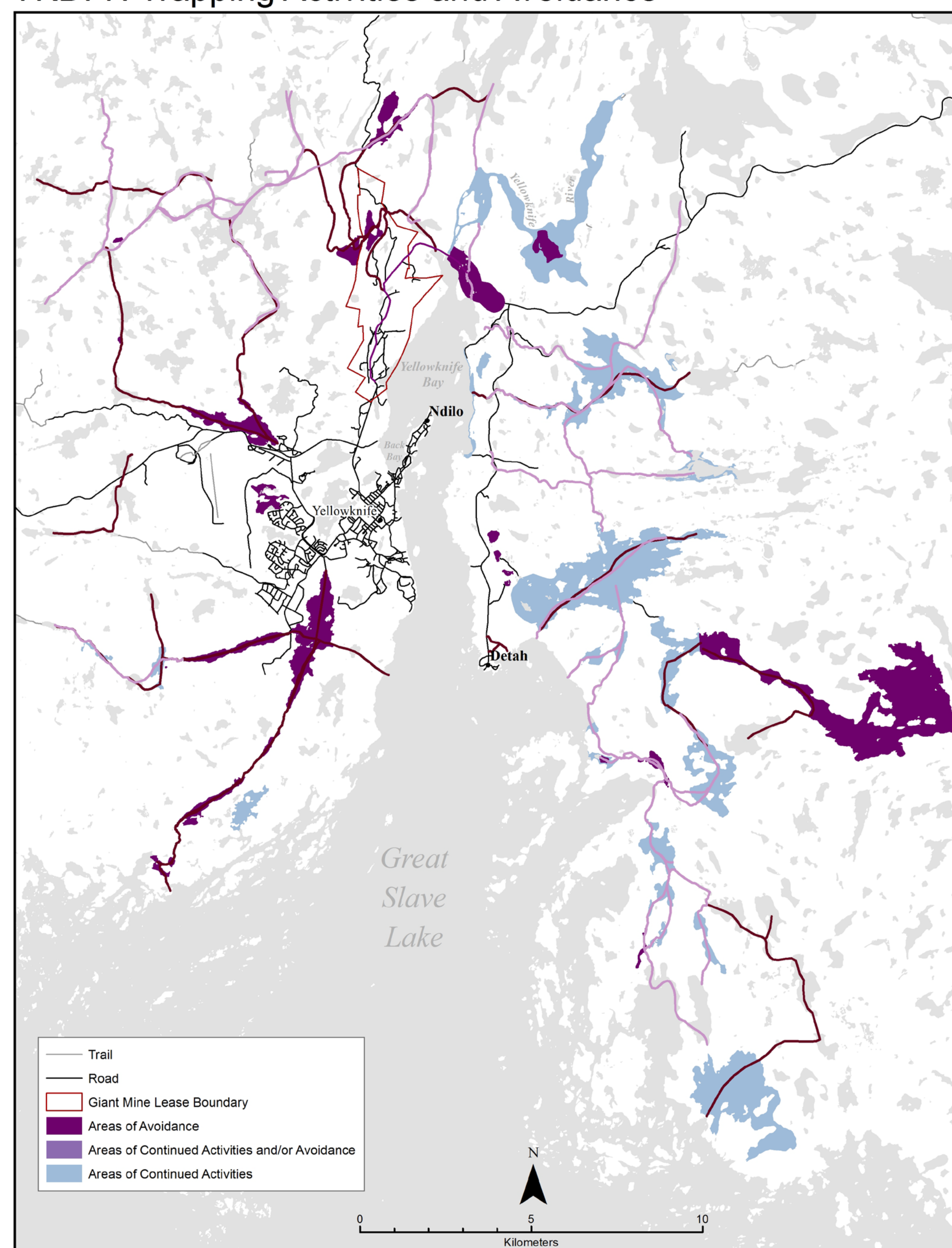
Amanda Degray, Memorial University



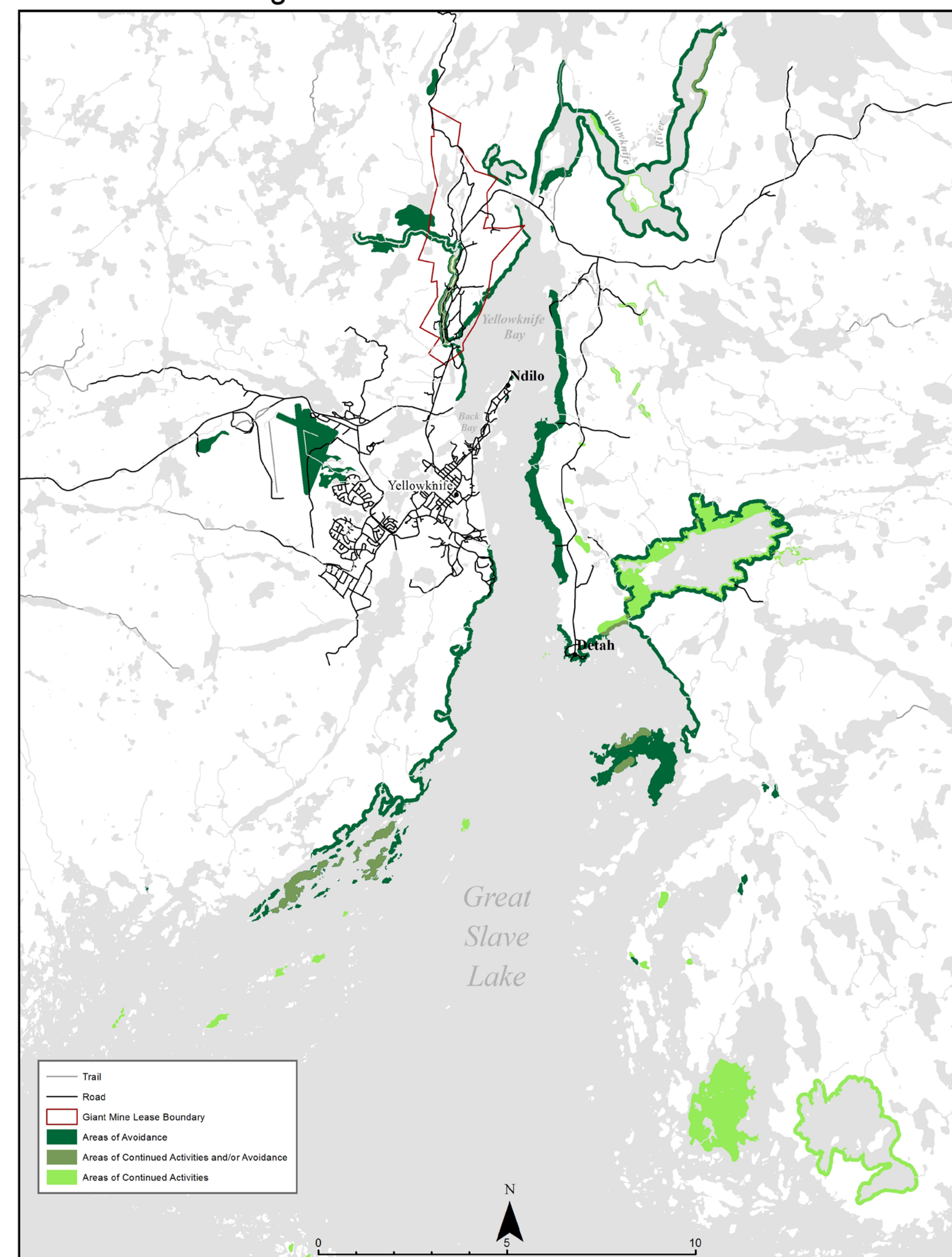
The Yellowknives Dene First Nation (YKDFN) have been using the lands and waters around Yellowknife Bay for time immemorial. During the 20<sup>th</sup> century, mining activities contaminated and fragmented the lands traditionally used by the First Nation communities. These avoidance maps show how historic mining contamination continues to affect everyday land use activities.



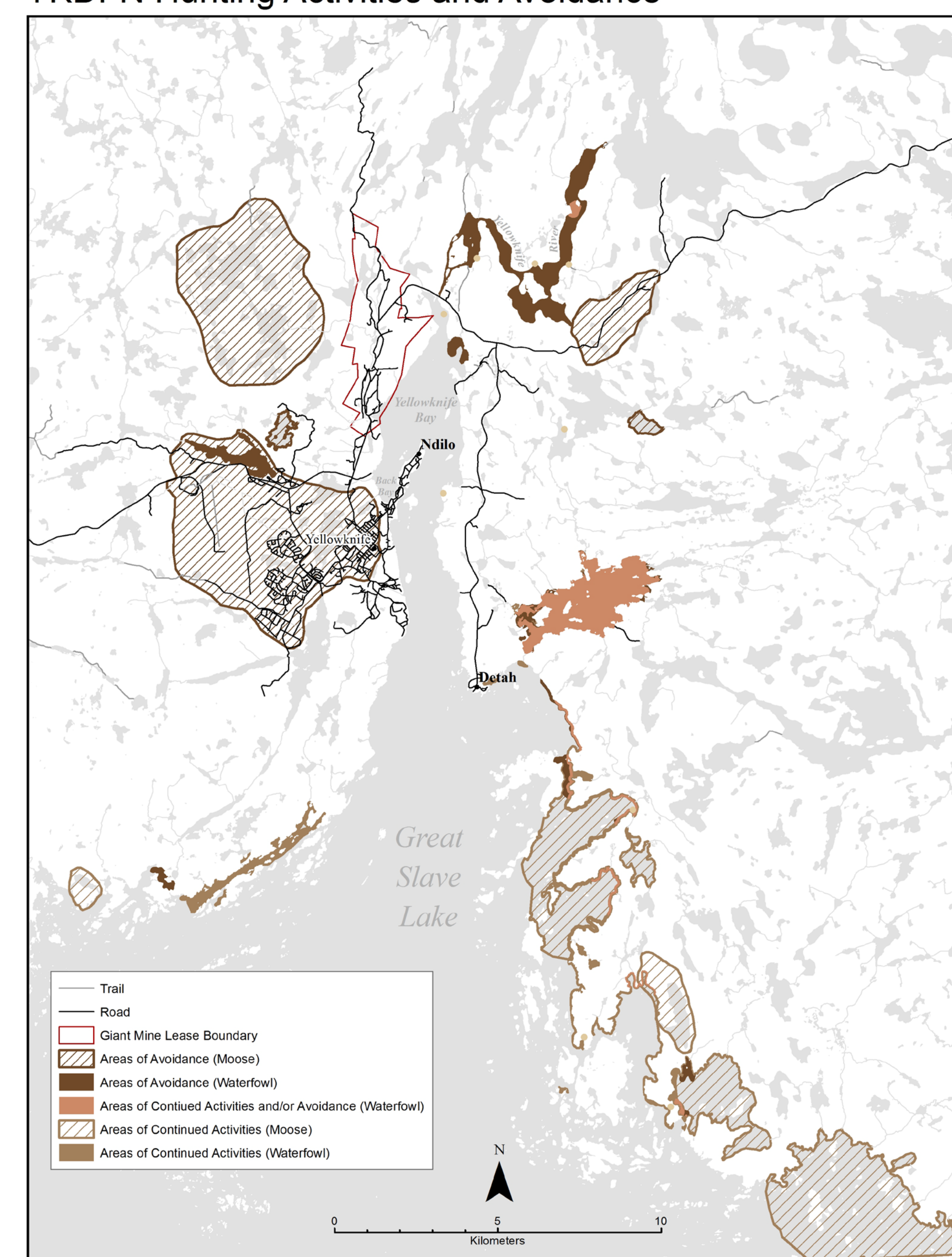
YKDFN Trapping Activities and Avoidance



YKDFN Harvesting Activities and Avoidance



YKDFN Hunting Activities and Avoidance



**Areas of Avoidance** are areas where land users used to go in the past for land use activities

**Areas of Continued Activities and/or Avoidance** are areas of overlap where land use activities continue to take place for some land users, and are avoided by others.

**Areas of Continued Activities** are areas where some land users continue to engage in land use activities

The composite maps show land use activities for 22 participants (10 elders and 13 active land users) and, therefore, are not representative of all YKDFN historical and contemporary land use activities

Map interviews were conducted in May 2016 and were facilitated by Mr. Fred Sangris





# Mapping Traditional Land Use Change in Yellowknife, NT

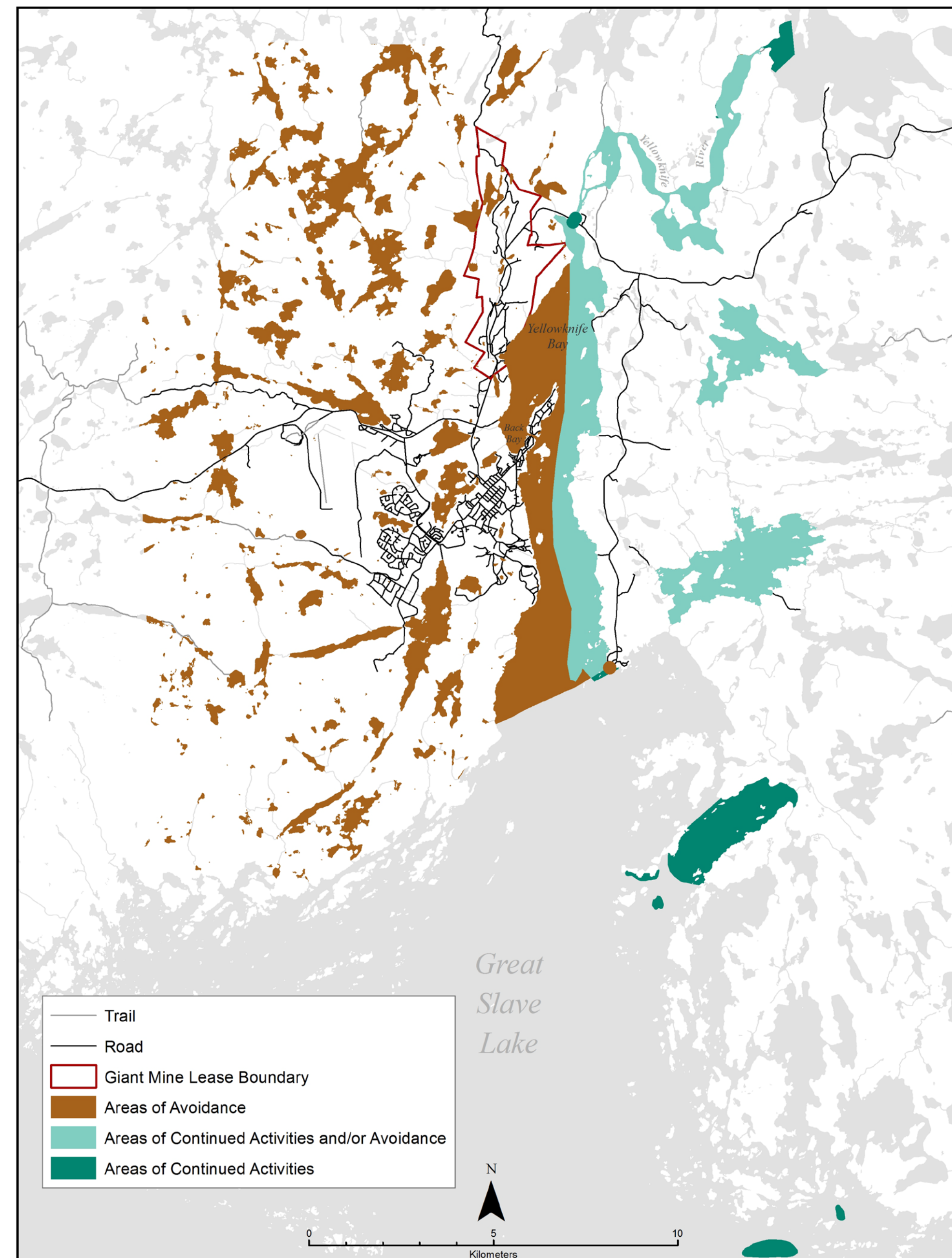
Amanda Degray, Memorial University



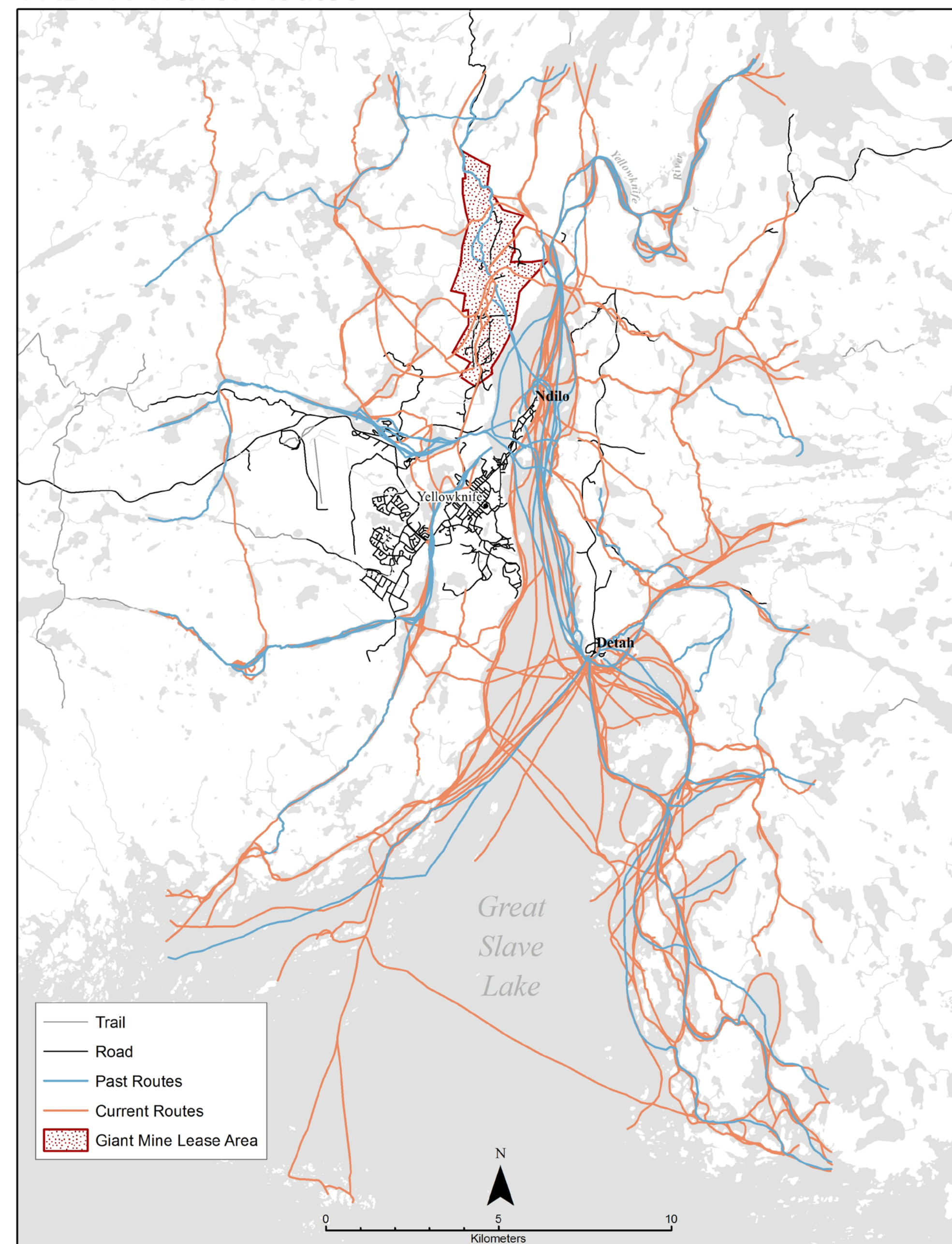
The Yellowknives Dene First Nation (YKDFN) have been using the lands and waters around Yellowknife Bay for time immemorial. During the 20<sup>th</sup> century, mining activities contaminated and fragmented the lands traditionally used by the First Nation communities. These maps show how historic mining contamination continues to affect everyday land use activities.



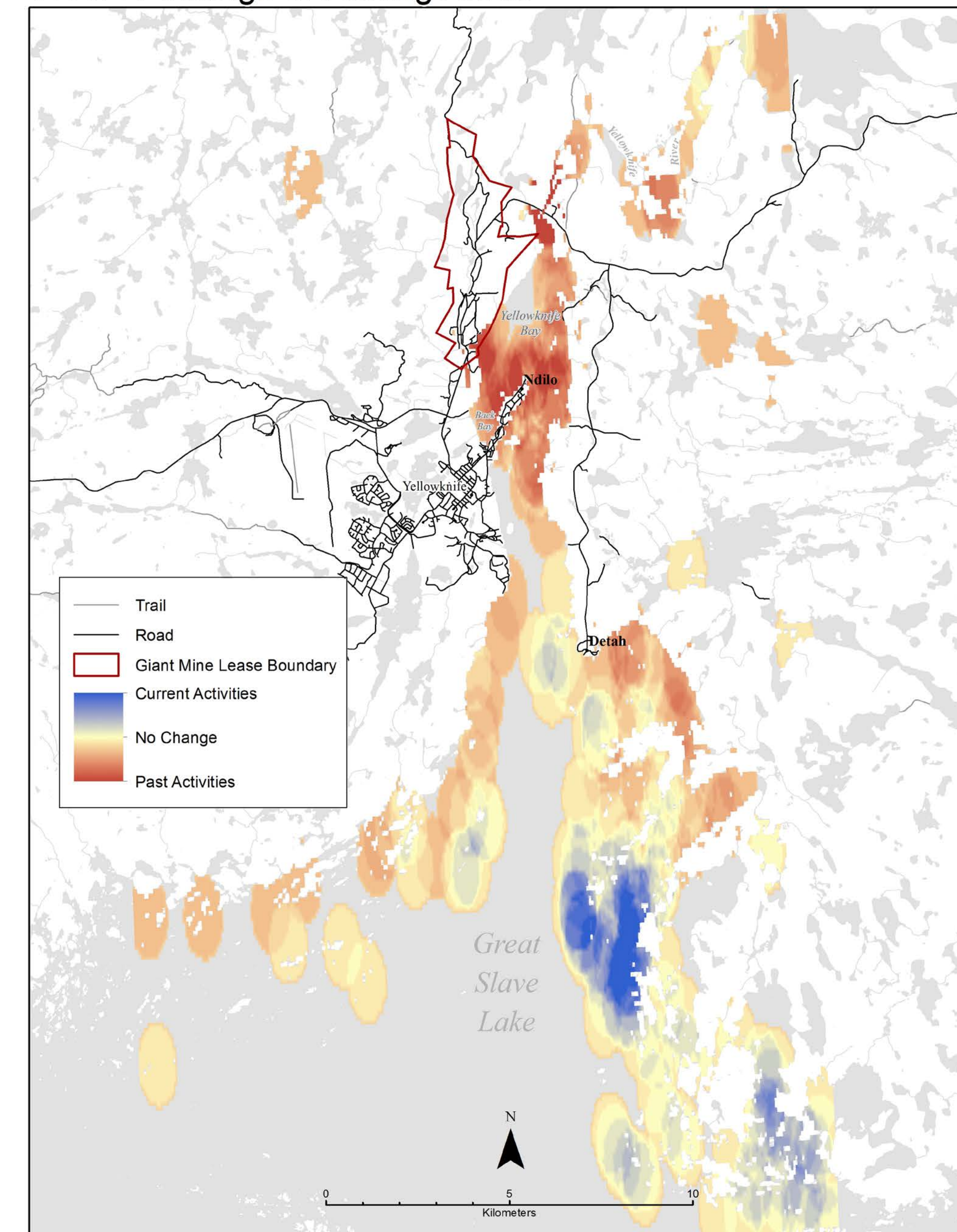
YKDFN Water Collection and Avoidance



YKDFN Travel Routes



YKDFN Change in Fishing Areas



**Note:**

Areas of Avoidance are areas where land users used to go collect drinking water  
Areas of Continued Activities and/or Avoidance are areas of overlap where some land users continue to collect drinking water, and others avoid  
Areas of Continued Activities are areas where some land users continue to collect drinking water

**Note:**

This map shows the spatial change of fishing activities in Yellowknife Bay. The red hotspots are areas where the density of fishing sites was greater in the past than they are today. The blue hotspots are areas where the density of fishing sites are greater today than they were in the past.